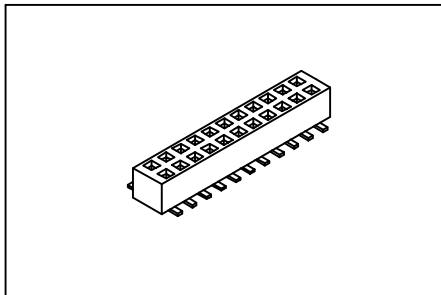


P.C.B. Socket 1.00mmX1.00mm(0.039"X0.039")

GXCON



Material:

Housing: High temperature housing withstands IR and VPR soldering methods.

Contacts: Phosphor Bronze.

Plating: Gold plated over nickel.

Electrical Characteristics:

Current Rating: 1 AMP.

Insulator Resistance: 5000MΩmin. at DC 500V.

Contact Resistance: 20mΩmax. at DC 100mA.

Operating Temperature: -65°C~+125°C.

Max Processing Temperature: 230°C for 30~60 seconds.

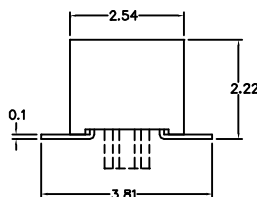
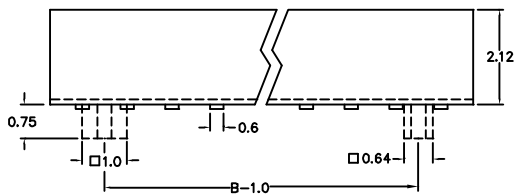
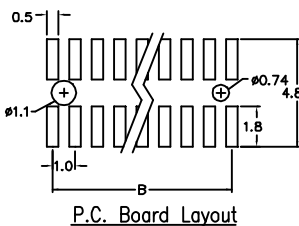
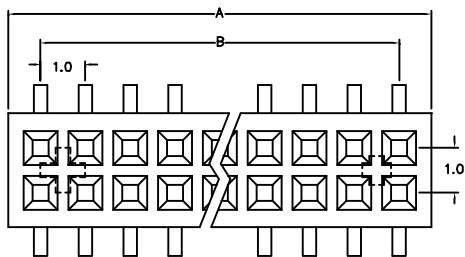
Mechanical Characteristics:

Insertion Force: 140g avg.(0.46mm sq. pin)

Withdrawal Force: 114g avg.(0.46mm sq. pin)

Features:

- * Dual Row Surface Mount.
- * Low profile insulator 2.12mm(0.083").



Position	10 Thru 100
Dimension	
A	1.0 X (No. of Positions)/2 +0.43
B	1.0 X (No. of Positions/2-1)

Ordering information

PS31- 2 50 1 3 N
 Series Double Row No. of Pin Per Row 1: Gold Plated 3: Surface Mount N: Without Post P: With Post